

Dialysis Access Institute at the Regional Medical Center

About the Dialysis Access Institute

The Dialysis Access Institute (DAI) was established at the Regional Medical Center in March 2011 to serve patients with end-stage renal disease. The Dialysis Access Institute team performs more than 3,700 procedures/operations each year, and physicians from throughout the world visit RMC to be trained in these procedures.

DAI specializes in obtaining, maintaining and salvaging accesses for dialysis. DAI is the only full-time, dedicated access center in existence.

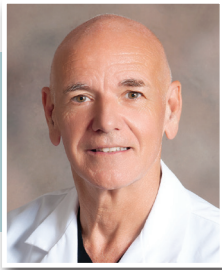
The design of the Dialysis Access Institute allows for excellent patient care in a very timely fashion. The majority of procedures are performed on an outpatient basis. Patients have designated parking with covered entrances for both Patient Drop Off and ambulance entrances.

Dialysis Access Surgery Via Live Streaming Video

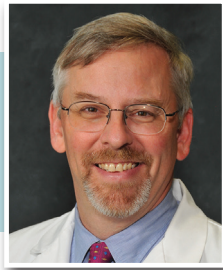
DAI also provides educational programs for physicians, nurses and technologists regarding dialysis access, both on site and through live video streaming, so that best practices can continue to be developed and reviewed for the patients.

Dialysis Access Institute Features:

- 6 Pre-Op stations
- 6 Post-Op stations
- 6 Operating/Procedure Suites
(2 of which have Live Video Streaming capabilities)
- Digital radiology equipment
- Hemodynamic monitors in each room
- Large video conferencing room
- Spacious waiting room
- Covered canopy for both the Patient Drop Off and Ambulance entrances



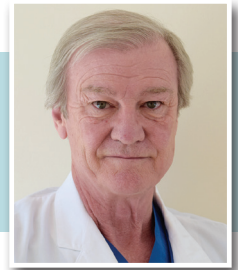
John R. Ross, MD, FACS, FASDIN
MEDICAL DIRECTOR,
DIALYSIS ACCESS INSTITUTE
ACCESS SURGEON



Karl A. Illig, MD
ACCESS SURGEON



Mark J. L. London, MD
ACCESS SURGEON



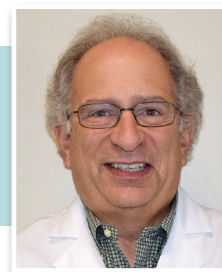
Jackson M. Ewart, MD
ACCESS SURGEON



Jalal E. Hakmei, MD
DIAGNOSTIC &
INTERVENTIONAL
NEPHROLOGIST



Mohamed A. Sheta, MD, FASN
DIAGNOSTIC &
INTERVENTIONAL
NEPHROLOGIST



John E. Aruny, MD
INTERVENTIONAL
RADIOLOGIST